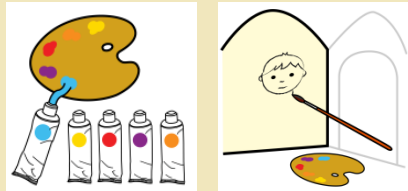


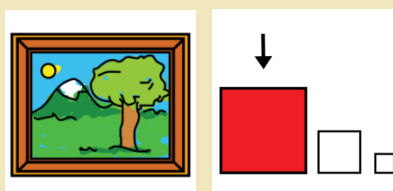
Alegoría de la Fortaleza

CLASIFICACIÓN
PINTURA MURAL

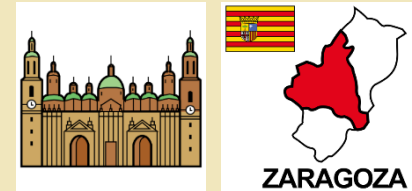
Serie
Cúpula Regina Martyrum del Pilar de Zaragoza (5/5)



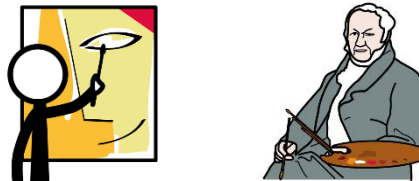
ÓLEO SOBRE YESO



CUADRO GRANDE



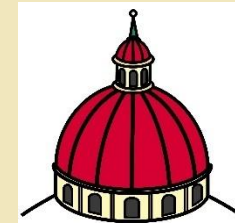
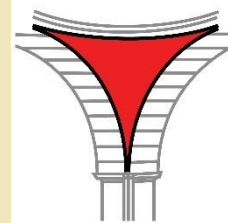
BASÍLICA DEL PILAR



PINTADO POR FRANCISCO DE GOYA



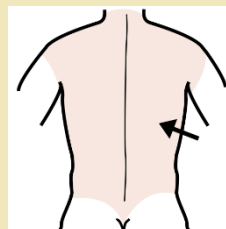
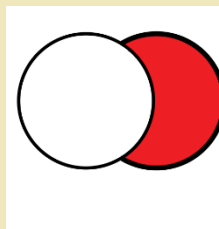
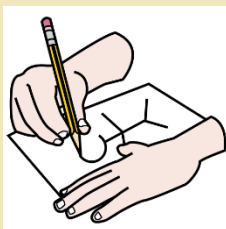
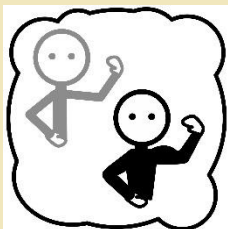
APRENDEMOS



ESTA PINTURA SE ENCUENTRA EN UNA DE LAS PECHINAS DE LA CÚPULA



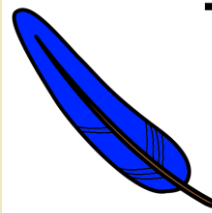
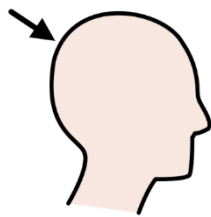
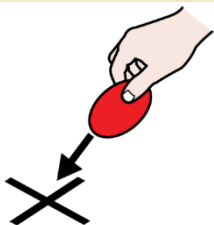
APRENDEMOS



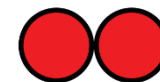
LA FORTALEZA SE REPRESENTA COMO UNA MUJER CON ARMADURA Y UNA LANZA DETRÁS DE LA ESPALDA.



APRENDEMOS



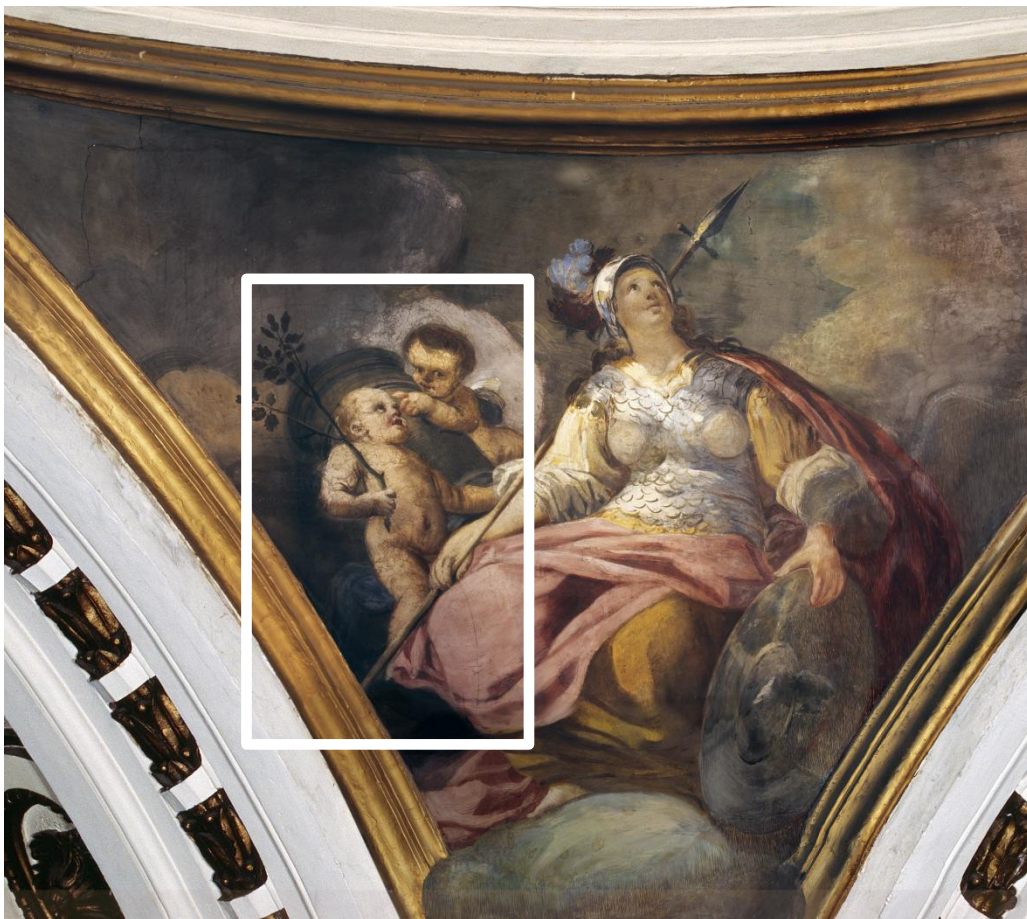
+



LA MUJER LLEVA EN LA CABEZA UN CASCO CON PLUMAS AZULES Y SE APOYA EN UN ESCUDO.



APRENDEMOS



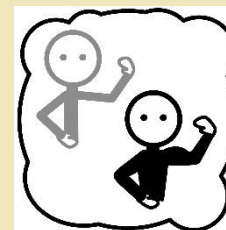
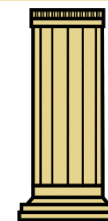
2



+



1



DOS NIÑOS LA ACOMPAÑAN Y UNO DE ELLOS SUJETA UNA COLUMNA SIMBOLIZANDO LA FORTALEZA